



ProjectConnect
fast access to project opportunities

ProjectConnect News Update

28 June 2010

This Fortnight's Topics



General News



Chevron Wheatstone Project starts listing Subsea packages

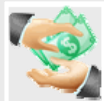


Sneak Preview of the ProjectConnect Industry Briefing

What's new on ProjectConnect



90 new members list on ProjectConnect in last fortnight.



Successful tenderer contact details have been provided for 45 awarded packages.



35 supply opportunities are about to close for full package registrations.



61 new full package supply opportunities were listed during the last fortnight.

Other useful resources on ProjectConnect (click on the logo)



Access the current and all previous ProjectConnect Newsletters



Summaries of the top stories from the REPS Newsletter



The latest business news from WA Business News



Advice and tips on tendering and bidding



Information about carbon management for your company



Business advice from NewMindscape Business Solutions



Staffing & recruiting advice from Hays Recruiting Experts

General News

Network Issues

A number of clients have reported problems with accessing the ProjectConnect server during the past week. The ProjectConnect system has been running all week and it appears that some Internet Service Providers' systems are not recognising the address of our server and reporting that it cannot be reached.

Unfortunately it is beyond our control to resolve this issue, but these systems are designed to update automatically and the problem should resolve itself, if it has not already done so.

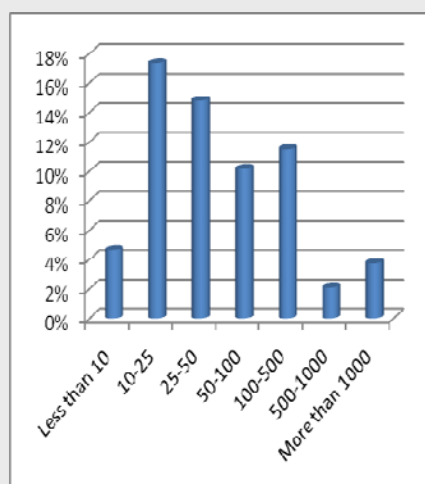
If you are trying to access ProjectConnect and you are getting an error message stating that the page cannot be displayed or that the server is unreachable, please contact me immediately.

Who uses ProjectConnect?

As off today, there are a total of 7,055 Australian companies registered on ProjectConnect. I was recently asked some questions about the average company registering on the system and did some research to find out who the users on ProjectConnect are.

In terms of company size, the distribution is pretty even across the range, with the majority being in the \$2 to \$10 million range.

Small businesses (with turnover below \$500,000) makes up 17% of our users.

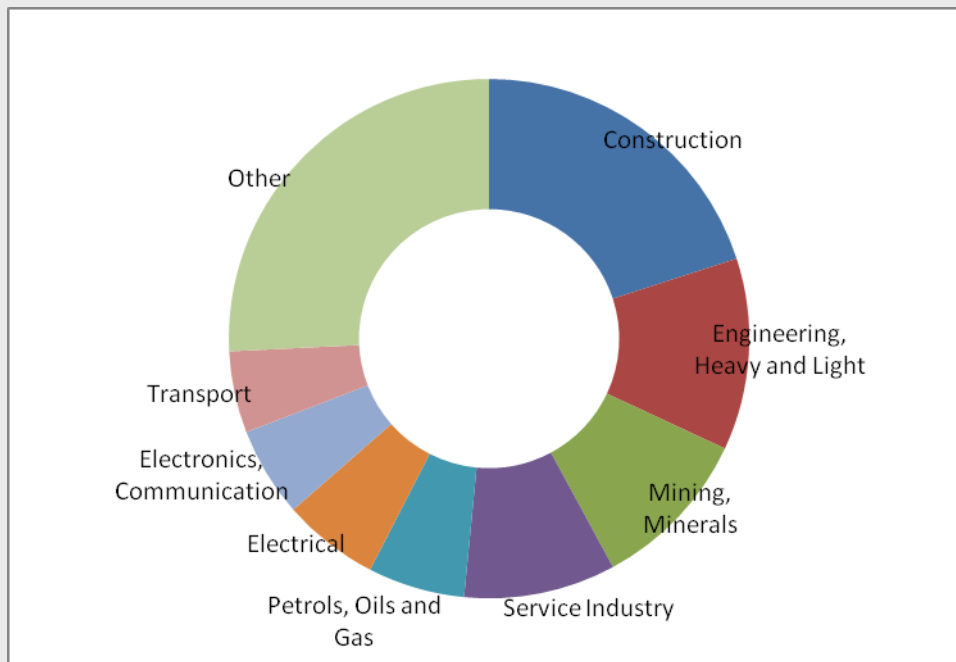


In terms of number of employees, the largest group have between 10 and 25, with the majority of companies falling between 10 and 500 employees. Once again quite a wide range.

The majority of users, 72% of the total, are located in Western Australia. Of those, 72% again are located in the Perth area.

Almost half of the companies (43%) have been using ProjectConnect for 3 years or more, with the 'oldest' users being on the system for more than 8 years.

The majority of companies are manufacturers (30%), service providers (27%) and contractors (21%), with the construction industry (20%) being the largest industry group, followed by Engineering (12%) and Mining & Minerals (10%).



ProjectConnect Support 3-7 July 2010

I will be travelling in a remote area from 3 to 7 July 2010 and will not be reachable. I will however be checking emails and messages once a day, so if you have an urgent problem, please leave me a message and I should be able to answer you within 24 hours.

Chevron Wheatstone Project starts listing Subsea packages

Chevron is currently in Front End Engineering and Design for the Wheatstone LNG Project located at Ashburton North some 12 km West of Onslow on the Pilbara coast of Western Australia.

Intecsea, the Subsea, Flowlines and Pipelines SSFP FEED contractor for Wheatstone, have commenced releasing its packages on Project Connect seeking expressions of interest from Australian vendors.

The Wheatstone Project is committed to providing full, fair and reasonable opportunity for Australian industry to supply goods and services to the Project. While LNG developments do require large capital expenditures overseas, the Wheatstone Project is working hard to realize local content opportunities for local contractors.

The Wheatstone Project webpage can be accessed via the link for the Wheatstone Project from the ProjectConnect homepage. For assistance with registering interest on supply opportunities via the free public site click on the HELP menu and download the help desk guideline "How to find and register for supply opportunities on the free public site".

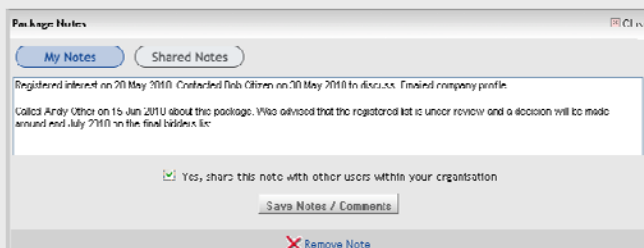
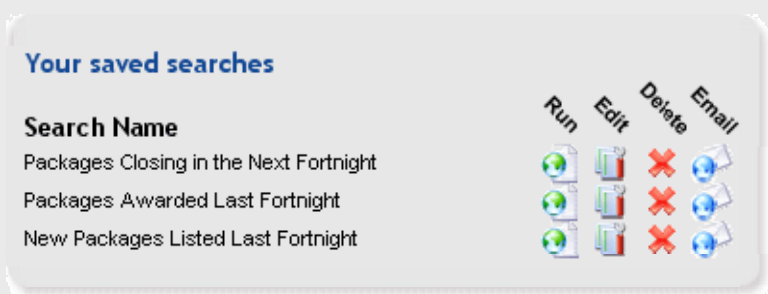
Sneak Preview of the ProjectConnect Industry Briefing

As I mentioned in the previous newsletter, we will be having a ProjectConnect Industry Briefing on 20 July 2010 at 4.30pm at the CCI Function Centre.

During this briefing I will give a presentation and live demonstration on some of the things users can do to make sure they are making the best possible use of the system, like how to use the search engines, how to edit your profile and other useful advice.

The briefing will also mark the launch of two new features for subscribers that we have recently completed.

The first is the ability to save your searches and have search results emailed to you on a regular basis. As an example, you could set up predefined searches to send the results listed in the last section of this newsletter to your mailbox every fortnight.



The second is the ability to keep notes on project opportunities and sharing those notes with your team. This will make it easier for you to keep track of packages, contacts you've had concerning them and share information amongst your team.

To book your seat for this briefing, please [CLICK HERE](#). Alternatively, copy and paste the below address into your web browser:

<https://ebiz.cciwa.com/ebusiness/meetings/meetingdetail.aspx?ID=3619>

Best Regards,
Chris Pretorius
Manager - ProjectConnect

WHAT'S NEW ON PROJECTCONNECT

NEW MEMBERS - 14/06/2010 to 27/06/2010

78 Australian and New Zealand organisations listed their profiles on ProjectConnect in the last fortnight.

PACKAGES AWARDED BETWEEN - 14/06/2010 to 27/06/2010

Over the last fortnight the below projects listed winner contact details on their awarded packages.

Project	Packages listed as awarded
Fiona Stanley Hospital	10
Gorgon Project	15
Southern Seawater Alliance	20

CLOSING FOR REGISTRATIONS BETWEEN - 28/06/2010 to 11/07/2010

There are 35 packages closing for full package registration over the next fortnight on the below projects.

Project	Packages about to close
Collie Urea Project	11
Gorgon Project	5
Shell Prelude Project	2
Wheatstone Project	17

NEW PACKAGES LISTED BETWEEN - 14/06/2010 to 27/06/2010

There have been 61 new full package supply opportunities listed on ProjectConnect by projects in the last fortnight.

Project	New Packages Listed
Collie Urea Project	2
Gorgon Project	27
Shell Prelude Project	9
Wheatstone Project	23

To easily find the packages summarised above, please see the **REFERENCE SHEET FOR SUBSCRIBER SEARCH FUNCTIONS** on the next page.

You can also use the free public system to find this information. For assistance click on the **HELP** menu and download the help desk guideline *"How to find and register for supply opportunities on the free public site"*.

REFERENCE SHEET FOR SUBSCRIBER SEARCH FUNCTIONS

For subscribers to ProjectConnect, there is an easy way to search for award details and package listings; and register interest against opportunities.

To access this search function, begin by logging into your company account, select the Searching menu and click on Search Supply Opportunities. This will open the below search engine.

Search Supply Opportunities

Enter your keywords to find project packages

For further information hover your mouse over options labels below:

Project :

Keyword(s) : **4 Click**

1 Select

Package Status : Full or Component Package Open Full Package Open Awarded packages New packages Closed packages

Filter by date : To: **2 Set dates**

(Optional) Closing date Listed date Awarded date

3 Select

To find...	...awarded packages:	...packages closing soon:	...packages recently listed:
1	Set Package Status to Awarded packages	Set Package Status to Full Package Open	Set Package Status to New packages
2	Set the Date Range from 14/06/2010 to 27/06/2010	Set the Date Range from 28/06/2010 to 11/07/2010	Set the Date Range from 14/06/2010 to 27/06/2010
3	Set Filter by Date to Awarded Date	Set Filter by date to Closing date	Set Filter by date to Listed date
4	Press the Search button.	Press the Search button.	Press the Search button.
Then...	Click on the Awarded Date of each opportunity to open the contact details of the successful suppliers. See next picture.	To register your interest, check the boxes for the opportunities you are interested in and press the Submit Interest button at the bottom of the webpage.	To register your interest, check the boxes for the opportunities you are interested in and press the Submit Interest button at the bottom of the webpage.

Closing	Full Package ?	Components of Package ?	Awarded Date ?
Awarded	<input type="checkbox"/>	<input type="checkbox"/>	11/1/2010
Awarded	<input type="checkbox"/>	<input type="checkbox"/>	1/2/2010
Awarded	<input type="checkbox"/>	<input type="checkbox"/>	20/1/2010
Awarded	<input type="checkbox"/>	<input type="checkbox"/>	9/12/2009
Awarded	<input type="checkbox"/>	<input type="checkbox"/>	18/1/2010

Click on date to open supplier details

Closing	Full Package ?	Components of Package ?	Awarded Date ?
19/2/2010	<input checked="" type="checkbox"/>	<input type="checkbox"/>	
15/2/2010	<input type="checkbox"/>	<input checked="" type="checkbox"/>	

Select the opportunities you are interested in.

You can also use the free public system to find this information. For assistance click on the HELP menu and download the help desk guideline "How to find and register for supply opportunities on the free public site".

If you need some assistance with your company account login, using the opportunities search engine or checking your registrations please click on the HELP menu within your company account system.